

SWP PLANNING – ONLINE TOOLS

Project Locator

Search

Search by input address

Locate

Search by DD or DMS

Latitude(DD)

Longitude(DD)

Handle DDCoords

Latitude(DMS)

Longitude(DMS)

Handle DMSCoords

Clear

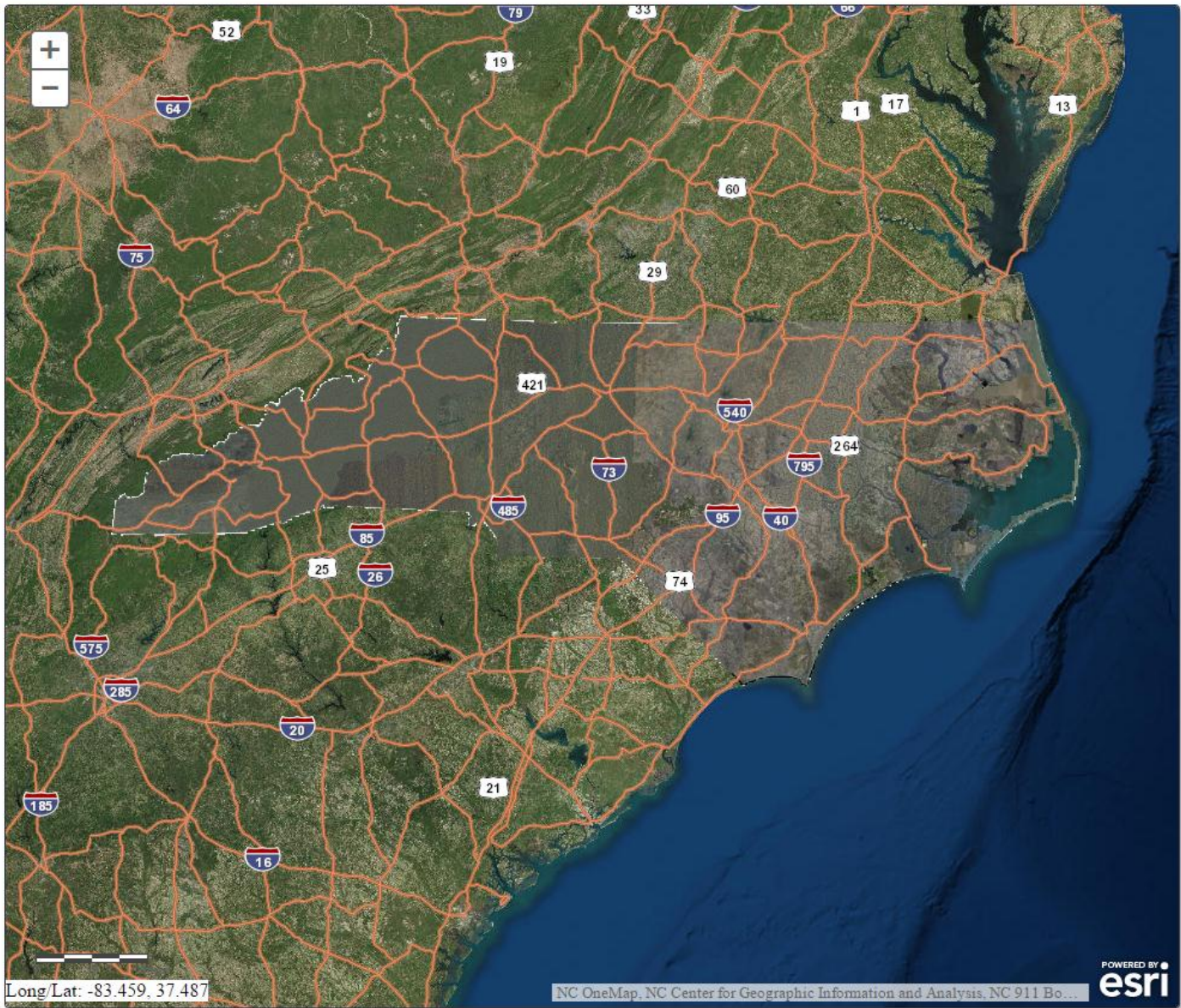
Reset Page

Toggle layers

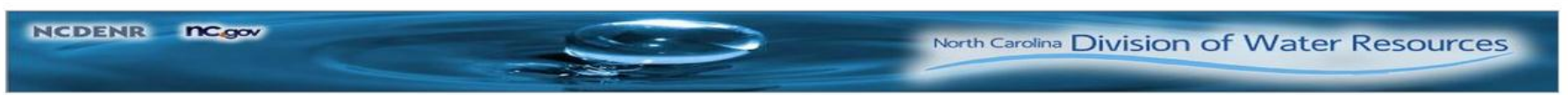
Legend

Results

Print



Long/Lat: -83.459, 37.487



Search

Search by input address

 Locate

Search by DD or DMS
 Latitude(DD)
 Longitude(DD)
 Handle DDCoords

Latitude(DMS)
 Longitude(DMS)
 Handle DMSCoords

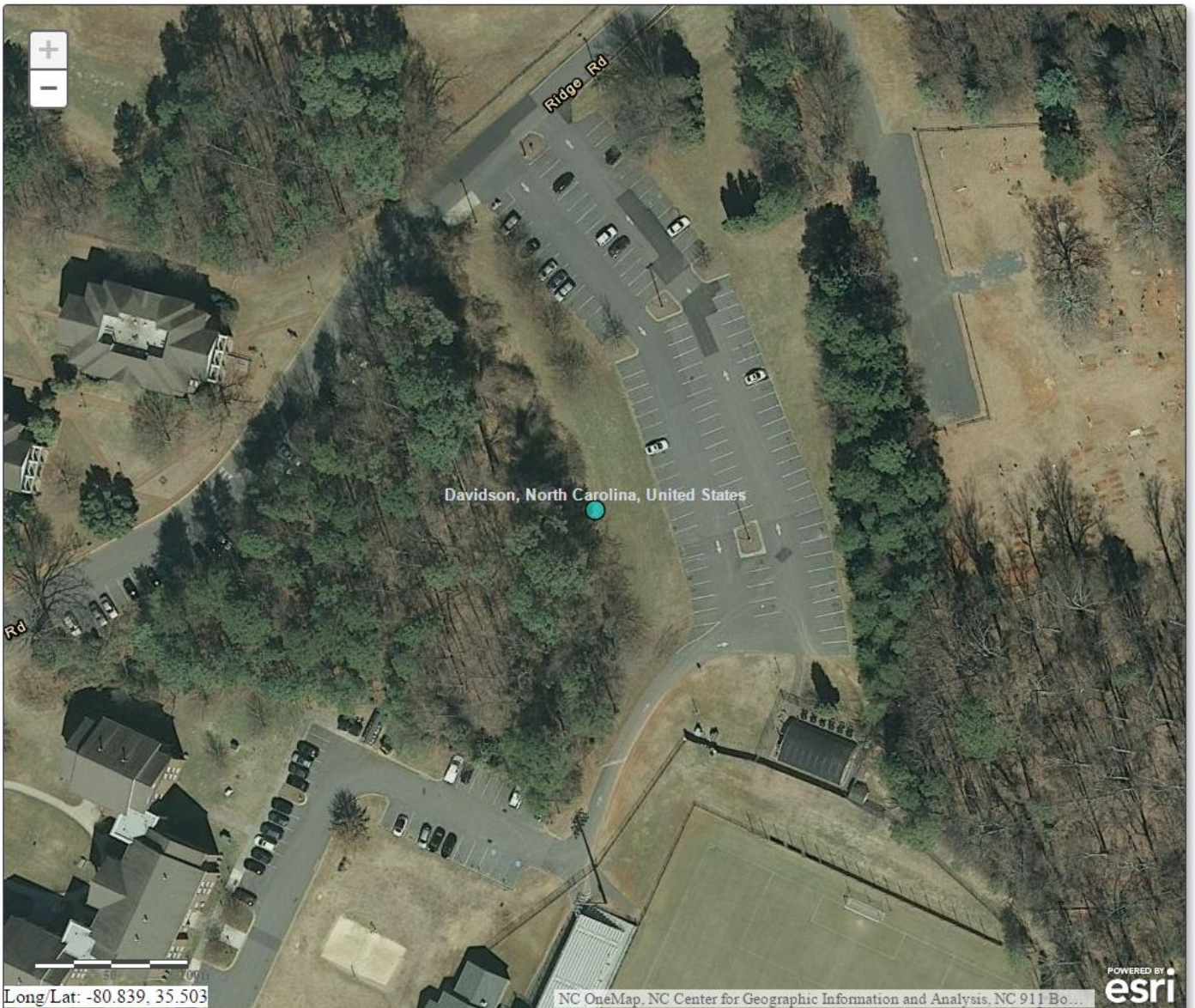
Clear Reset Page

Toggle layers

Legend

Results

Print



Search

Toggle layers

Legend

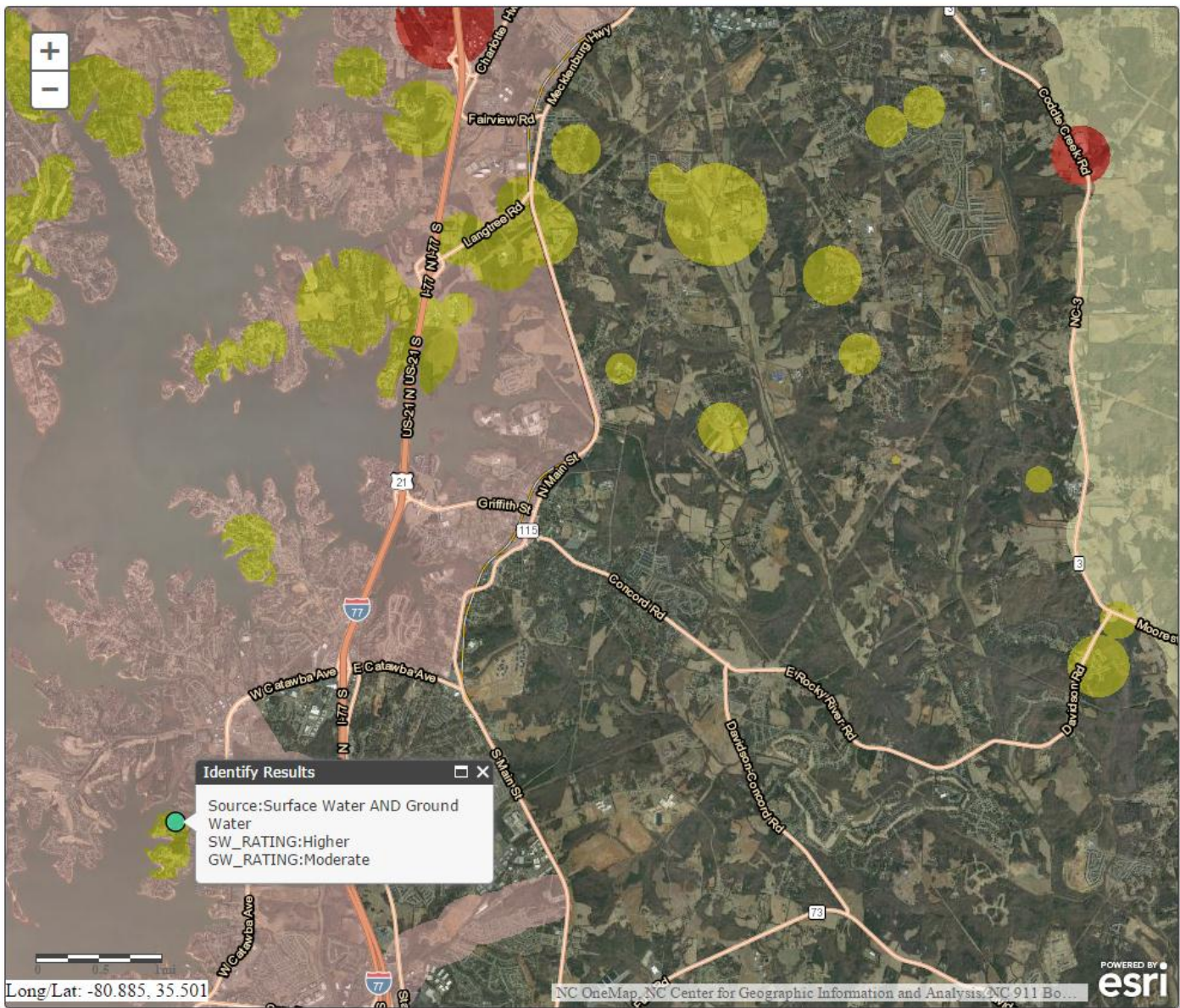
Results

Latitude: 35.46563492770383
 Longitude: -80.89876828149075

Total features returned: 1

Source	Surface Water Rating	Ground Water Rating
Surface Water AND Ground Water	Higher	Moderate

Print





Search

Toggle layers

Legend

PWS

Drinking Water Assessment Area Susceptibility - Ground Water

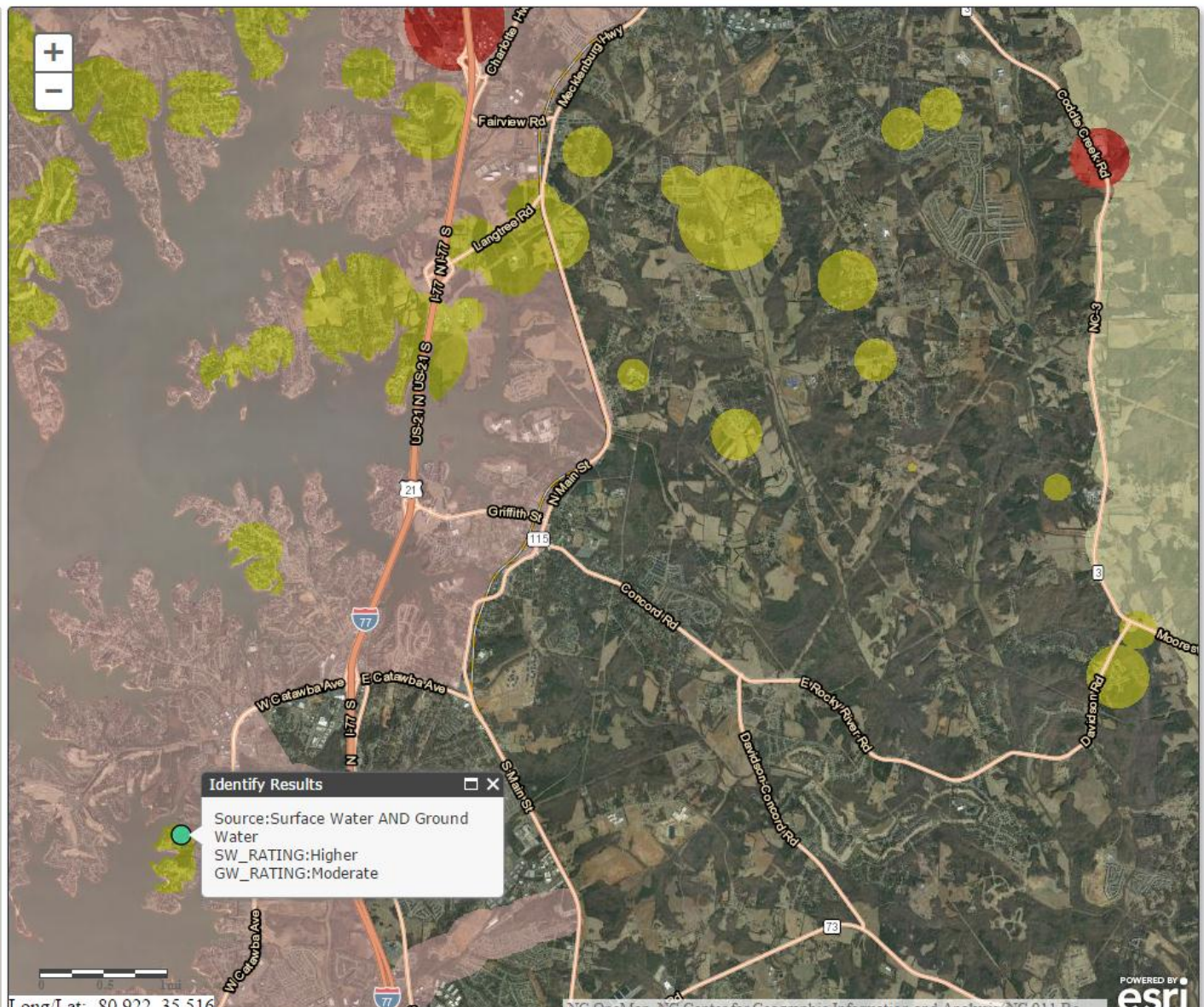
- Higher
- Moderate
- Lower

Drinking Water Assessment Area Susceptibility - Surface Water

- Higher
- Moderate
- Lower

Results

Print





Search

Toggle layers

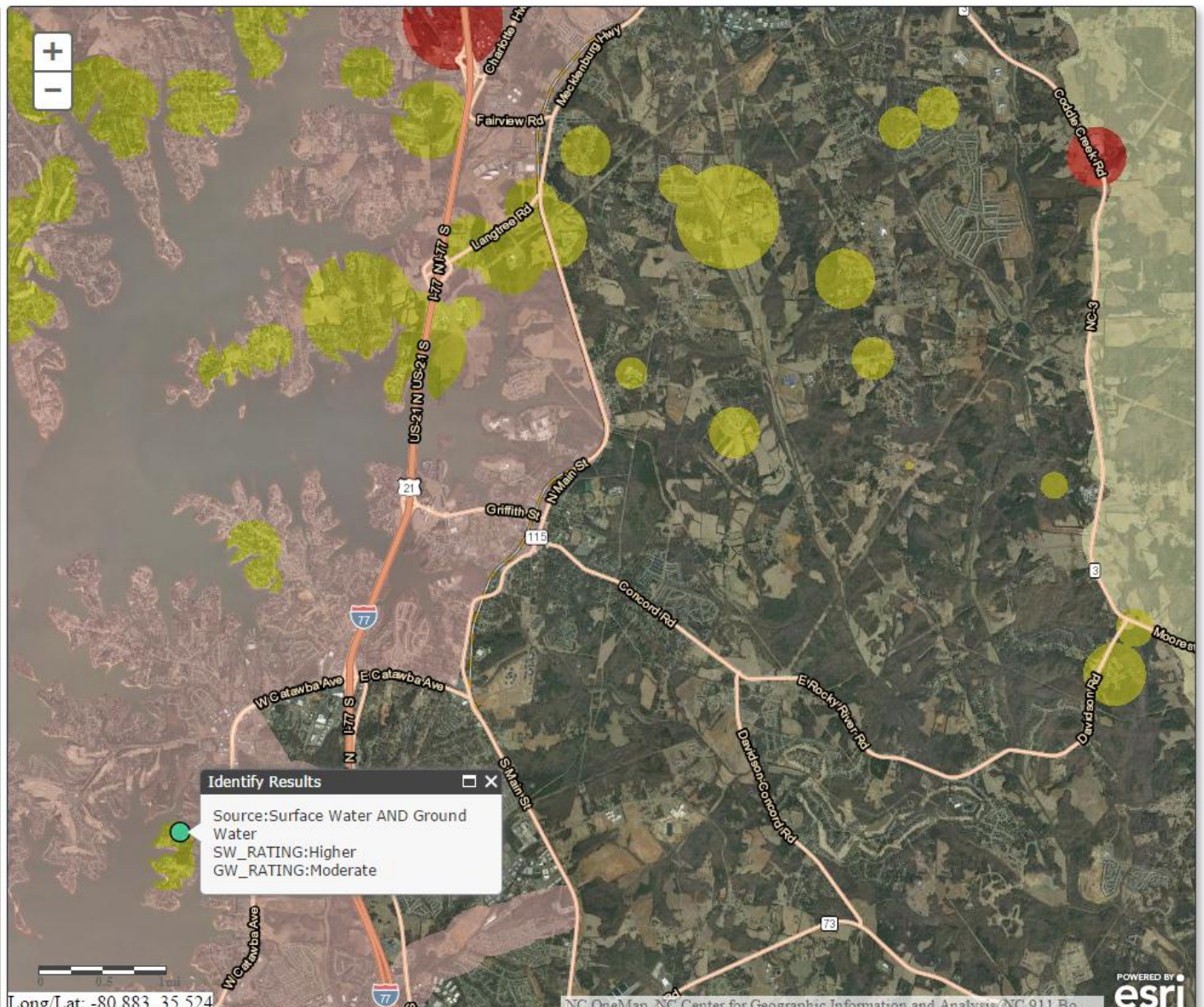
Click to toggle the visibility of the layers

- Streets
- PWS
- State of NC Imagery
- World Imagery

Legend

Results

Print





Search

Toggle layers

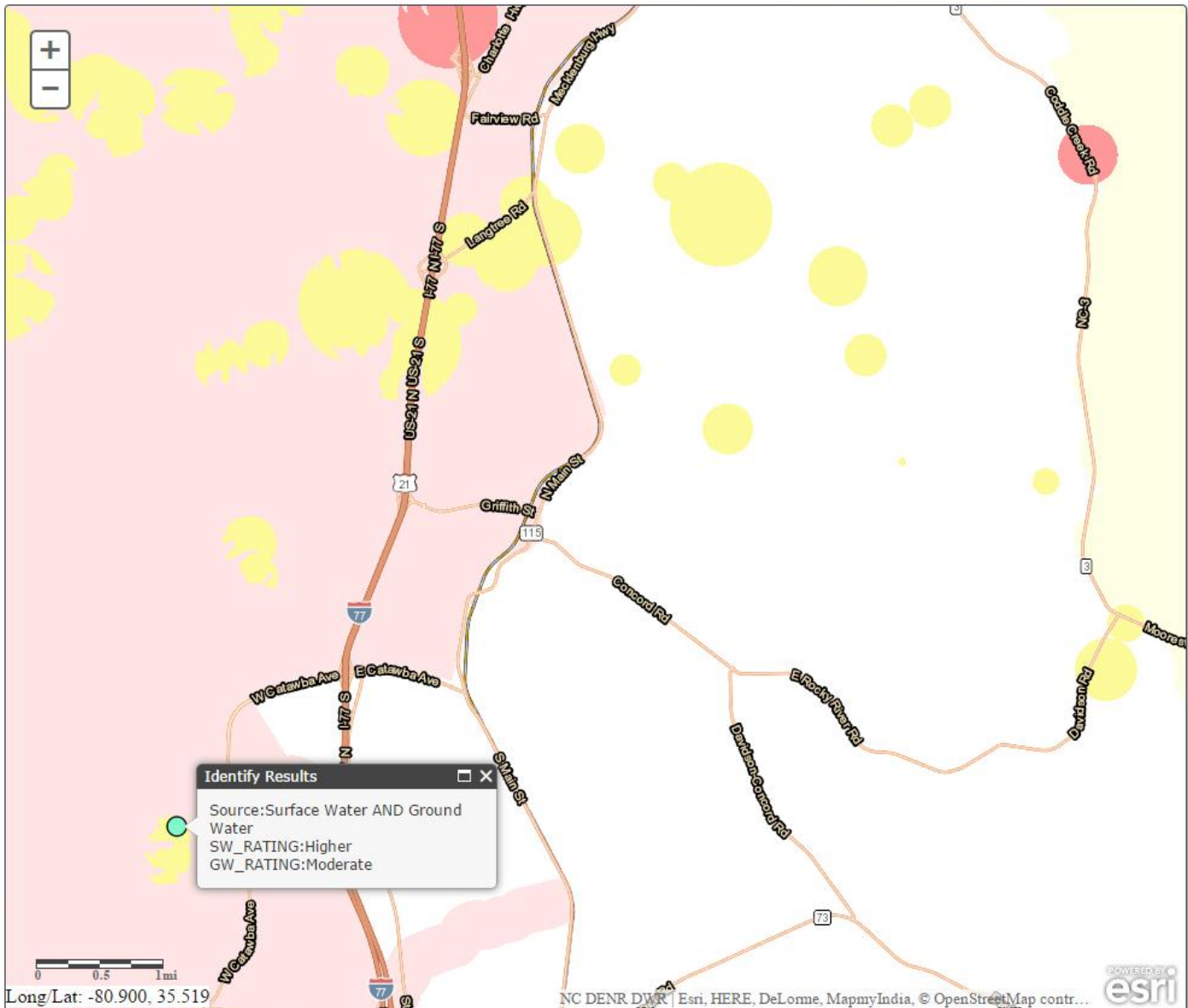
Click to toggle the visibility of the layers

- Streets
- PWS
- State of NC Imagery
- World Imagery

Legend

Results

Print





Search

Toggle layers

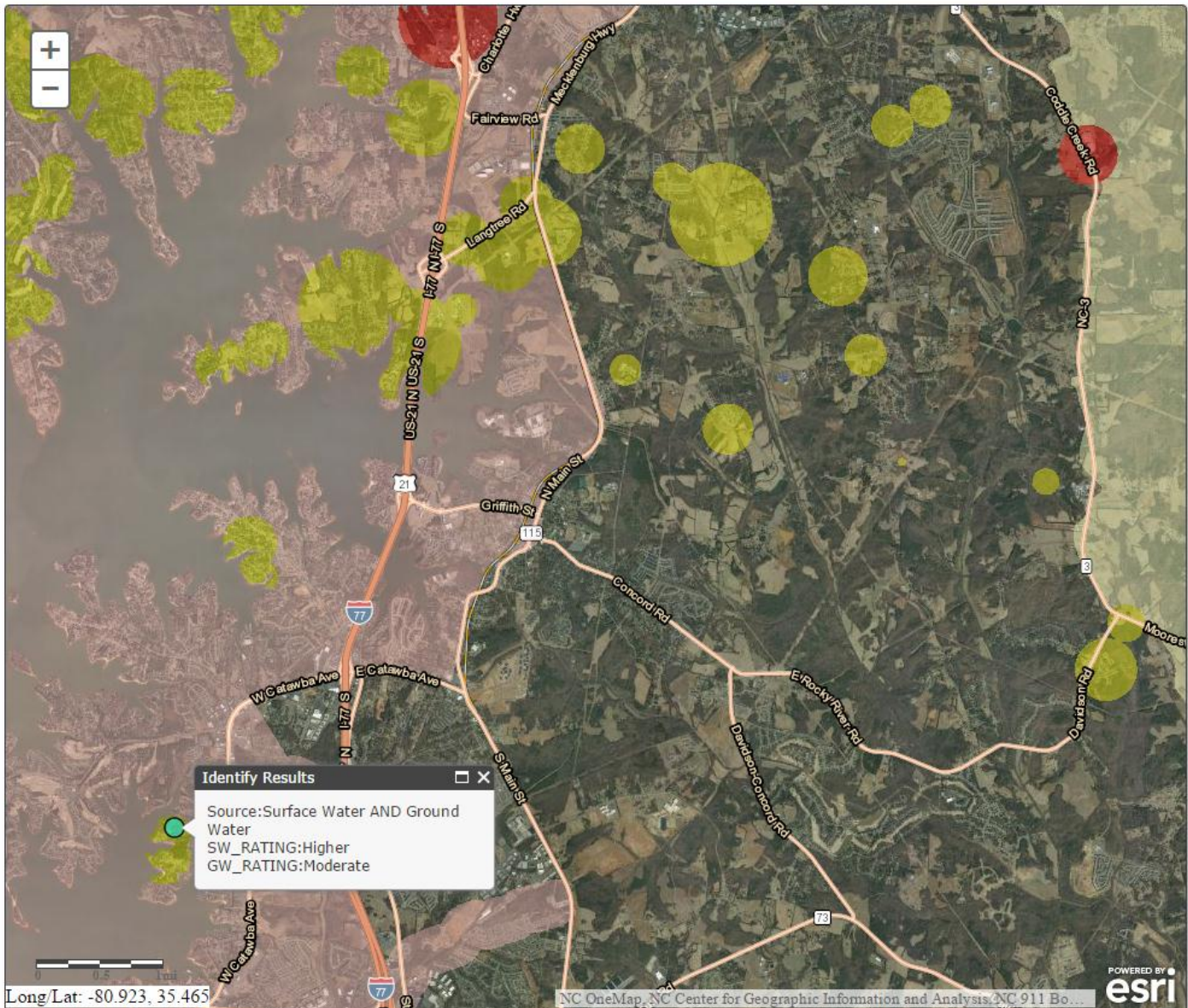
Legend

Results

Print

Click on print button. Then click on print out.

Print





Search

Toggle layers

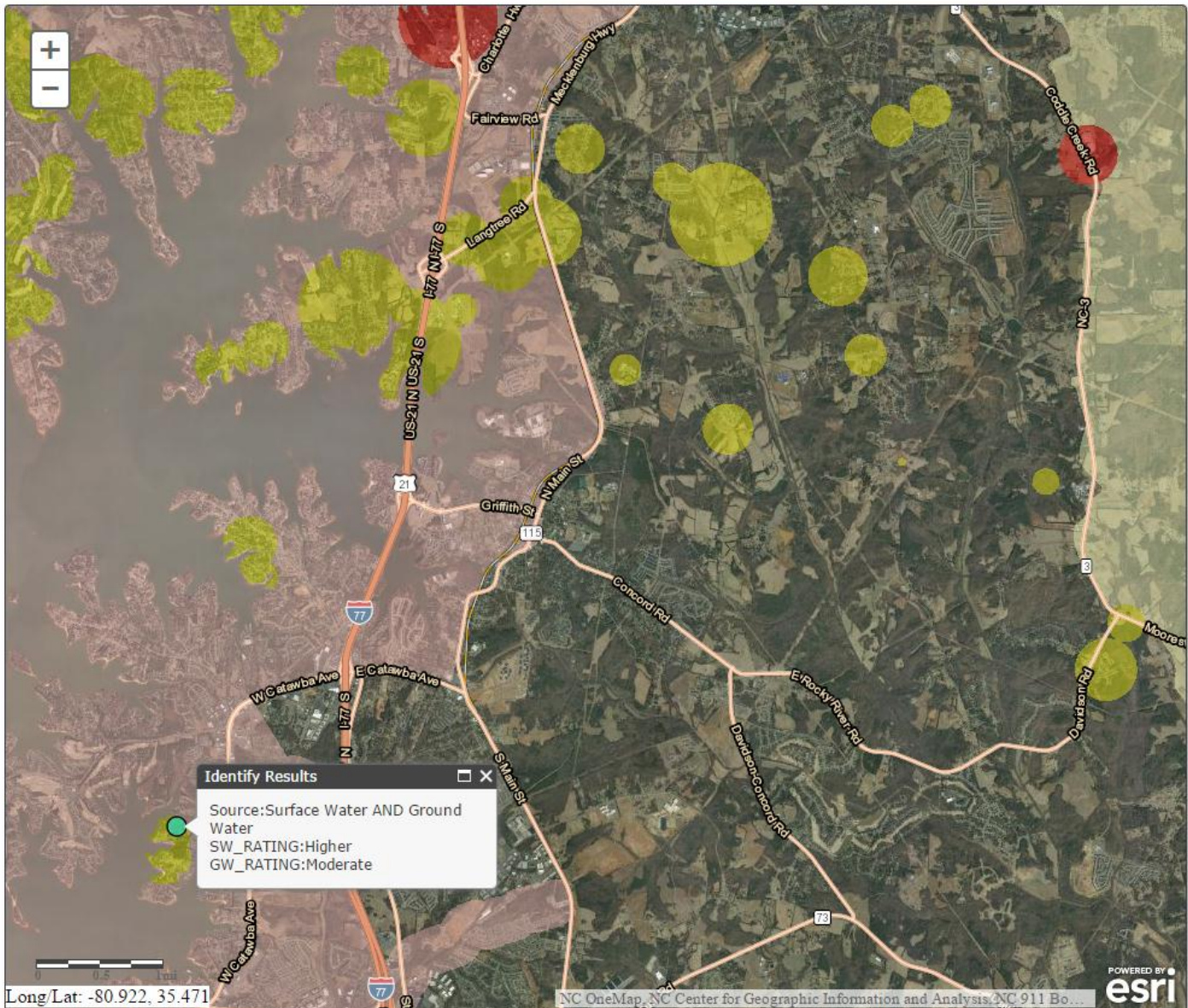
Legend

Results

Print

Click on print button. Then click on print out.

Printout



Source Water Assessment Mapping Tool

Surface Water Protection (SWP) Program

Surface water refers to the streams, rivers and lakes that are used as sources of public drinking water. In NC, more than 4 million citizens rely on surface water for safe and reliable drinking water. Our state's surface waters face a variety of threats, including agriculture pressures, stormwater runoff, development and emerging contaminants. The NC Surface Water Protection Program serves the state by initiating proactive protection strategies to identify and mitigate these threats. We work in partnership with a variety of other agencies and programs to promote local drinking water protection in local communities all across NC.

- [View the SWP Planning Brochure](#)
- [SWP Guidance Document](#)
- **Approved SWP Plans**
 - [City of Marion](#)
 - [Davidson Water](#)
 - [Ivy River](#)
 - [Kerr Lake Regional Water](#)
 - [Lincoln County](#)
 - [Lower Creek](#)
 - [Pilot Mountain](#)

Source Water Assessment Program (SWAP)

North Carolina's Source Water Assessment Program (SWAP) provides detailed assessments of all public drinking water intakes in the state. These assessments include a Susceptibility Rating to indicate the relative risk of source contamination. Our SWAP data is readily available to help define environmental priorities and projects that may prevent pollution. We have concise and current reports downloadable from this web page. Any local effort to protect drinking water should begin here.

- [Learn more about NC's SWAP](#)
- [View the SWAP Brochure](#)

- [Source Water Assessment Reports](#)



- [Source Water Assessment Mapping Tool](#)
- [Original USGS Methodology](#)
- [USGS Methodology Update - 2009](#)
- [NC Project Locator](#)

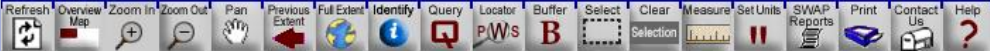


Wellhead Protection (WHP) Program

The NC Wellhead Protection (WHP) Program functions to protect groundwater sources of drinking water from contamination. Wellhead protection is simply the protection of all or part of an area surrounding a well from which the groundwater is drawn. The size of this area will vary and depends on a variety of factors, including local geologic and hydrogeologic features. Most communities begin by creating a voluntary Wellhead Protection Plan. These proactive plans identify strategies and concerns unique to each individual location. Our WHP Program staff is prepared to assist your groundwater protection efforts.

- [Learn more about NC's WHP Program](#)
- [View the WHP Brochure](#)
- [Sample WHP Plans \(under construction\)](#)

NC SWAPinfo



To view the changes made in the visible column, press the refresh button above.

Public Water Supply Sources

- Adjacent
- Campground
- Community
- Non-Transient Non-Community
- Transient Non-Community

Show Group Hide Group

Wellhead Protection Areas

- Wellhead Protection Areas

Show Group Hide Group

Ground Water Assessment Areas

- Ground Water Delineated Area
- Ground Water Zone A

Show Group Hide Group

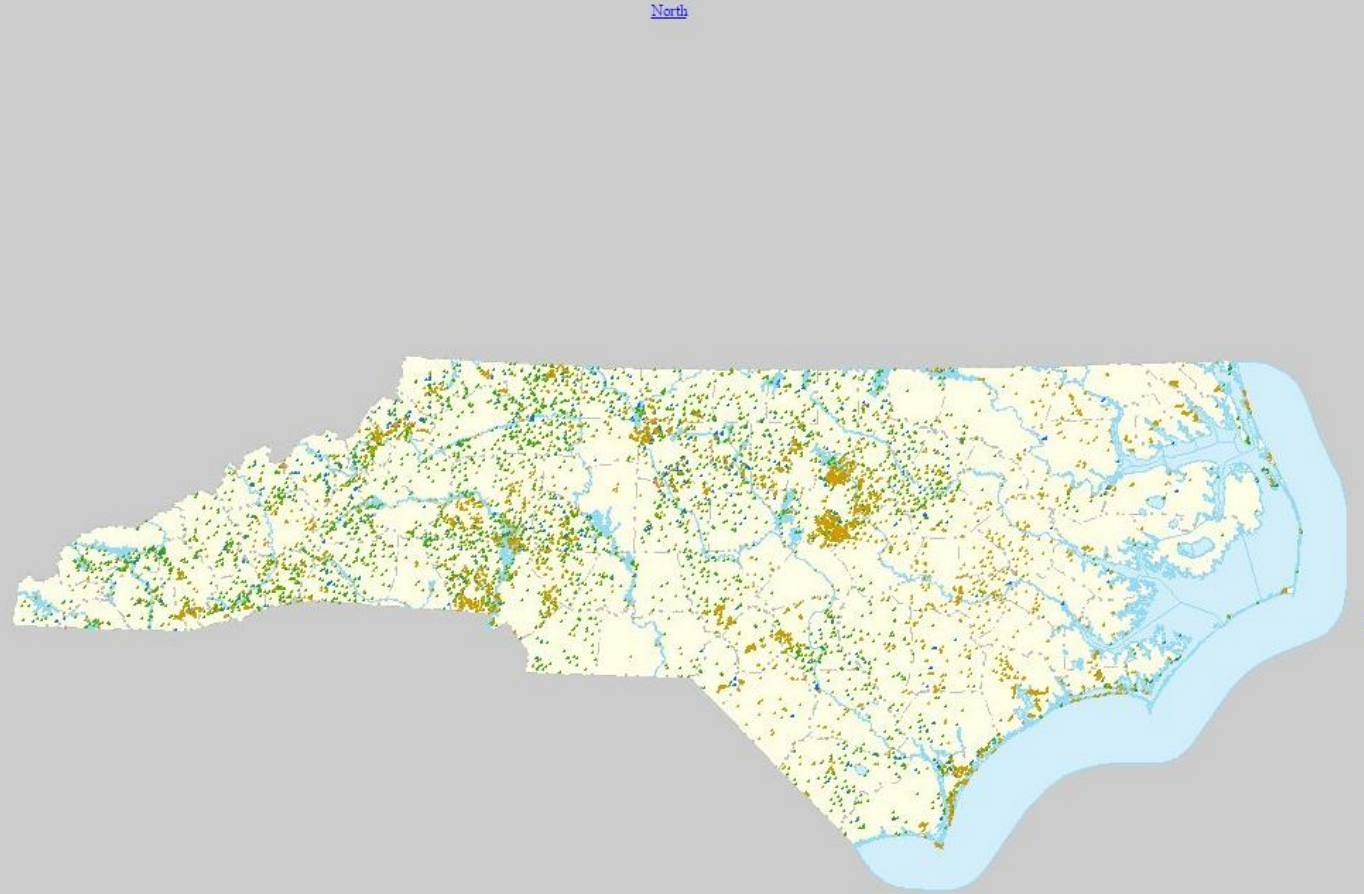
Surface Water Assessment Areas - Zones

- Watershed Boundary
- Protected Area Boundary (WS-IV and V only)
- Critical Area (NA for WS-1)
- Stream Zone

Show Group Hide Group

Potential Contaminant Sources

- Animal Operations
- CERCLIS Sites
- National Priority List Sites
- Non Discharge Permits
- NPDES Permits
- Old Landfill Sites
- PCB Sites
- Pollution Incidents
- RCRA Gen./Trans. Facilities
- RCRA TSD Sites
- Septage Disposal Sites



0 1107798m

NC SWAPinfo



To view the changes made in the visible column, press the refresh button above.

Public Water Supply Sources

- Visible Active
- Adjacent
 - Campground
 - Community
 - Non-Transient Non-Community
 - Transient Non-Community

Show Group Hide Group

Wellhead Protection Areas

- Visible Active
- Wellhead Protection Areas

Show Group Hide Group

Ground Water Assessment Areas

- Visible Active
- Ground Water Delineated Area
 - Ground Water Zone A

Show Group Hide Group

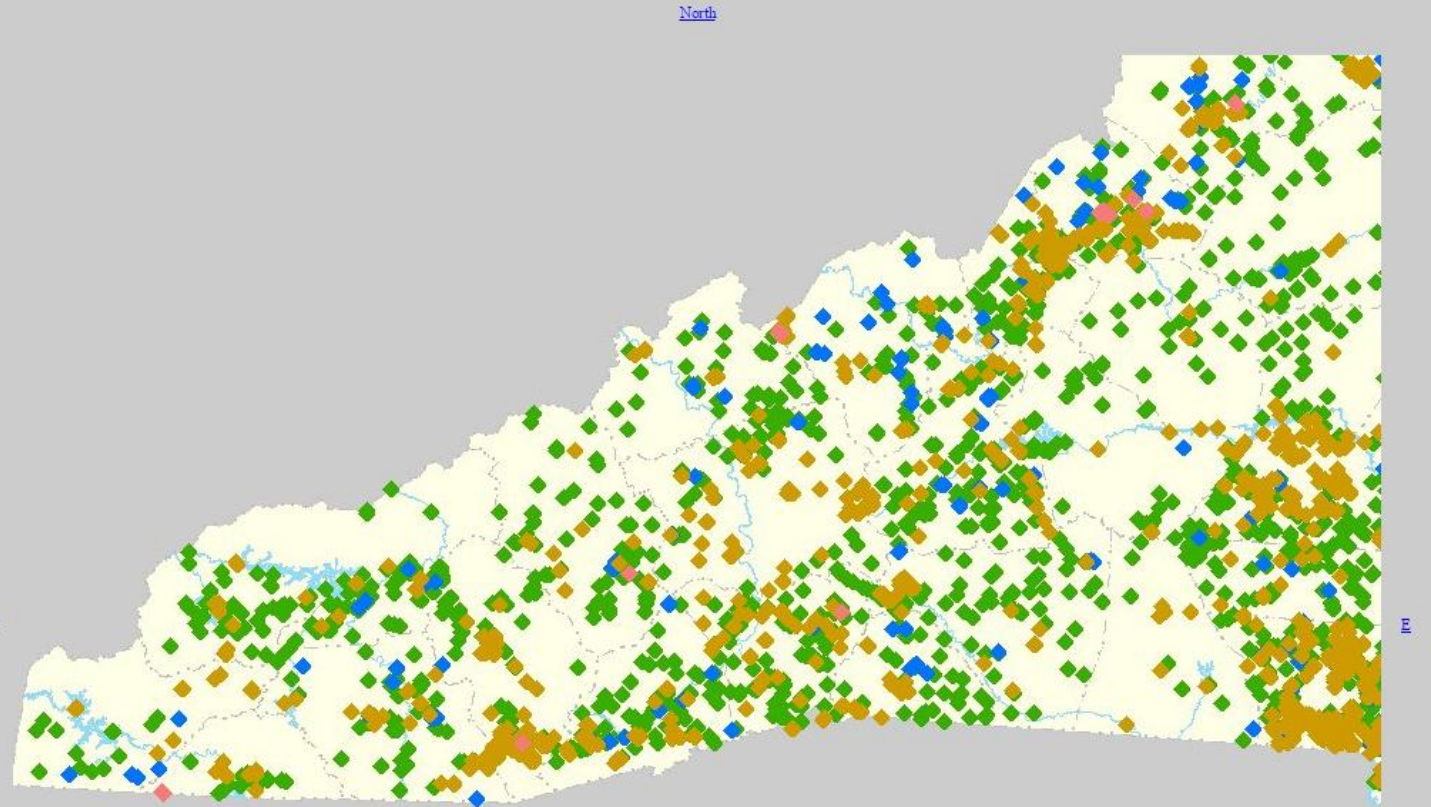
Surface Water Assessment Areas - Zones

- Visible Active
- Watershed Boundary
 - Protected Area Boundary (WS-IV and V only)
 - Critical Area (NA for WS-1)
 - Stream Zone

Show Group Hide Group

Potential Contaminant Sources

- Visible Active
- Animal Operations
 - CERCLIS Sites
 - National Priority List Sites
 - Non Discharge Permits
 - NPDES Permits
 - Old Landfill Sites
 - PCB Sites
 - Pollution Incidents
 - RCRA Gen./Trans. Facilities
 - RCRA TSD Sites
 - Contaminant Disposal Sites



South

NC SWAPinfo



To view the changes made in the visible column, press the refresh button above.

Public Water Supply Sources

- Adjacent
- Campground
- Community
- Non-Transient Non-Community
- Transient Non-Community

Show Group Hide Group

Wellhead Protection Areas

- Wellhead Protection Areas

Show Group Hide Group

Ground Water Assessment Areas

- Ground Water Delineated Area
- Ground Water Zone A

Show Group Hide Group

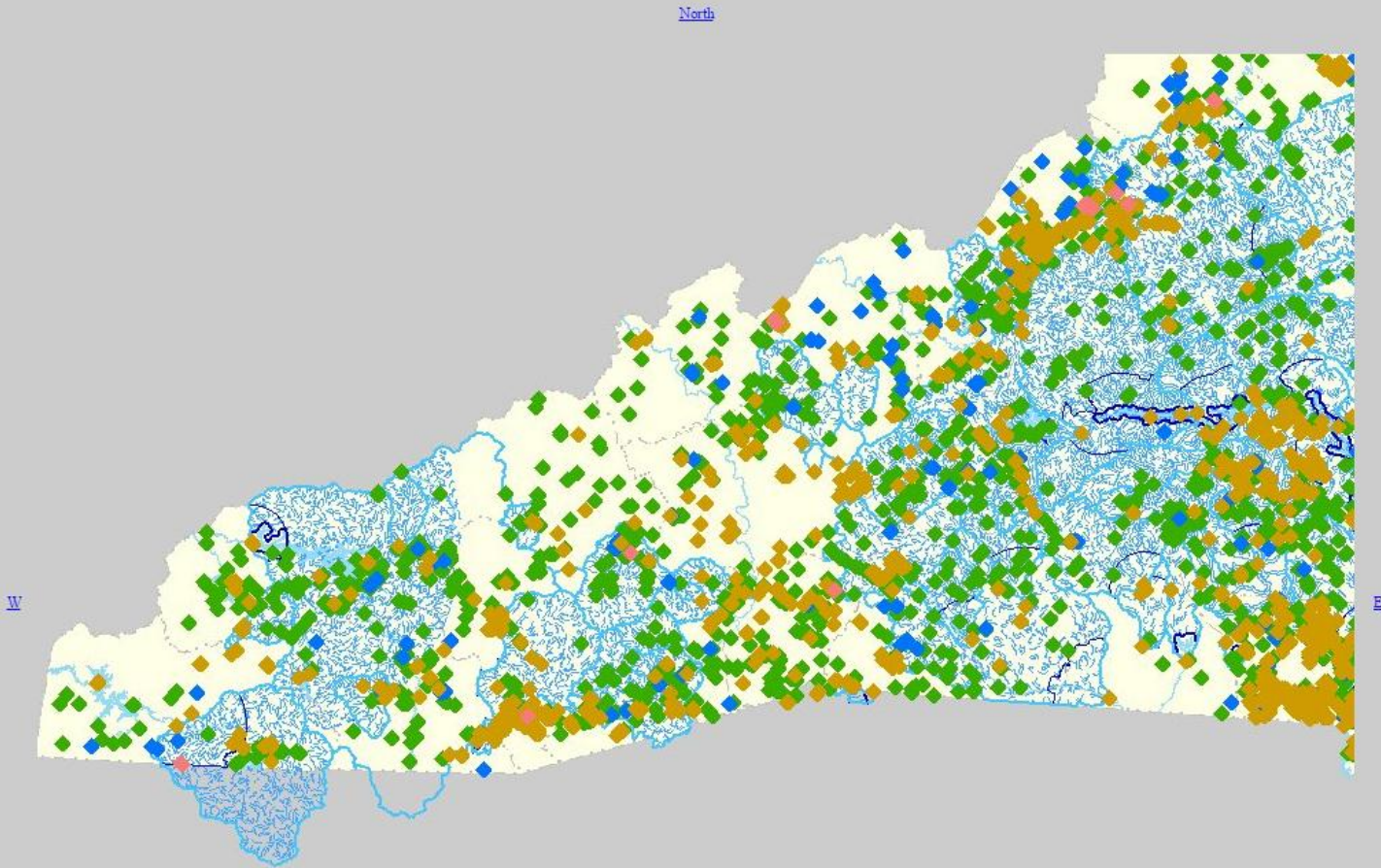
Surface Water Assessment Areas - Zones

- Watershed Boundary
- Protected Area Boundary (WS-IV and V only)
- Critical Area (NA for WS-1)
- Stream Zone

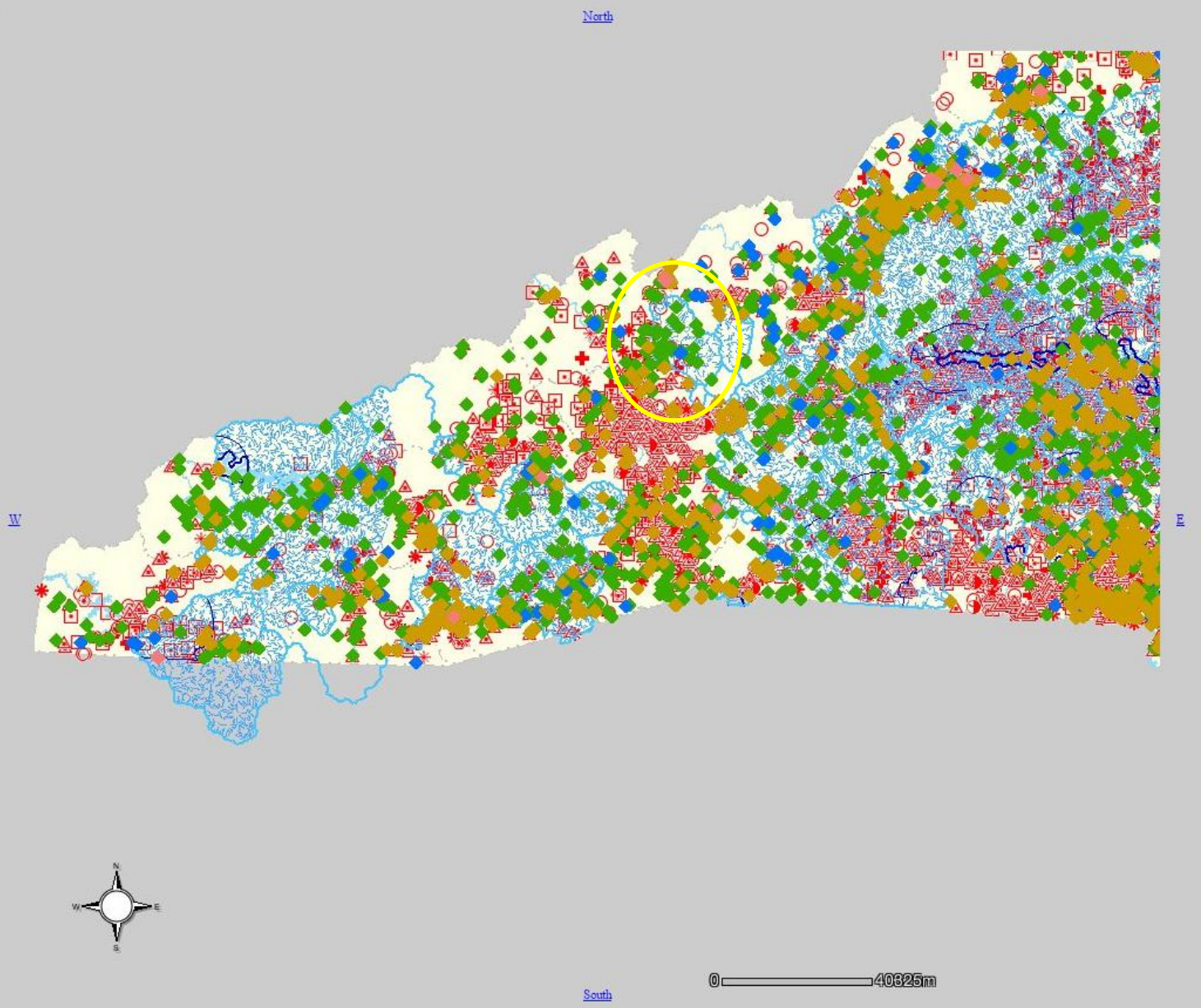
Show Group Hide Group

Potential Contaminant Sources

- Animal Operations
- CERCLIS Sites
- National Priority List Sites
- Non Discharge Permits
- NPDES Permits
- Old Landfill Sites
- PCB Sites
- Pollution Incidents
- RCRA Gen./Trans. Facilities
- RCRA TSD Sites
- Septage Disposal Sites



- Ground Water Delineated Area
- Ground Water Zone A
- Show Group Hide Group
- Surface Water Assessment Areas - Zones**
- Visible Active
 - Watershed Boundary
 - Protected Area Boundary (WS-IV and V only)
 - Critical Area (NA for WS-1)
 - Stream Zone
- Show Group Hide Group
- Potential Contaminant Sources**
- Visible Active
 - Animal Operations
 - CERCLIS Sites
 - National Priority List Sites
 - Non Discharge Permits
 - NPDES Permits
 - Old Landfill Sites
 - PCB Sites
 - Pollution Incidents
 - RCRA Gen./Trans. Facilities
 - RCRA TSD Sites
 - Septage Disposal Sites
 - Soil Remediation Sites
 - Solid Waste Facilities
 - Tier II Sites
 - UIC Permits
 - UST Permits
- Show Group Hide Group
- Landmarks**
- Visible Active
 - Major Roads
 - Municipal Boundaries
 - Hydrology
 - Counties
- Show Group Hide Group



about:blank

Community

SOURCE TYPE	PWS_ID	SOURCE CODE	SYSTEM NAME	SOURCE NAME	CITY	STATE	ZIP
S	0111025	S04	WEAVERVILLE, TOWN OF	IVY RIVER	WEAVERVILLE	NC	28787

Watershed Boundary

ZONE EPA Source ID PWS_ID

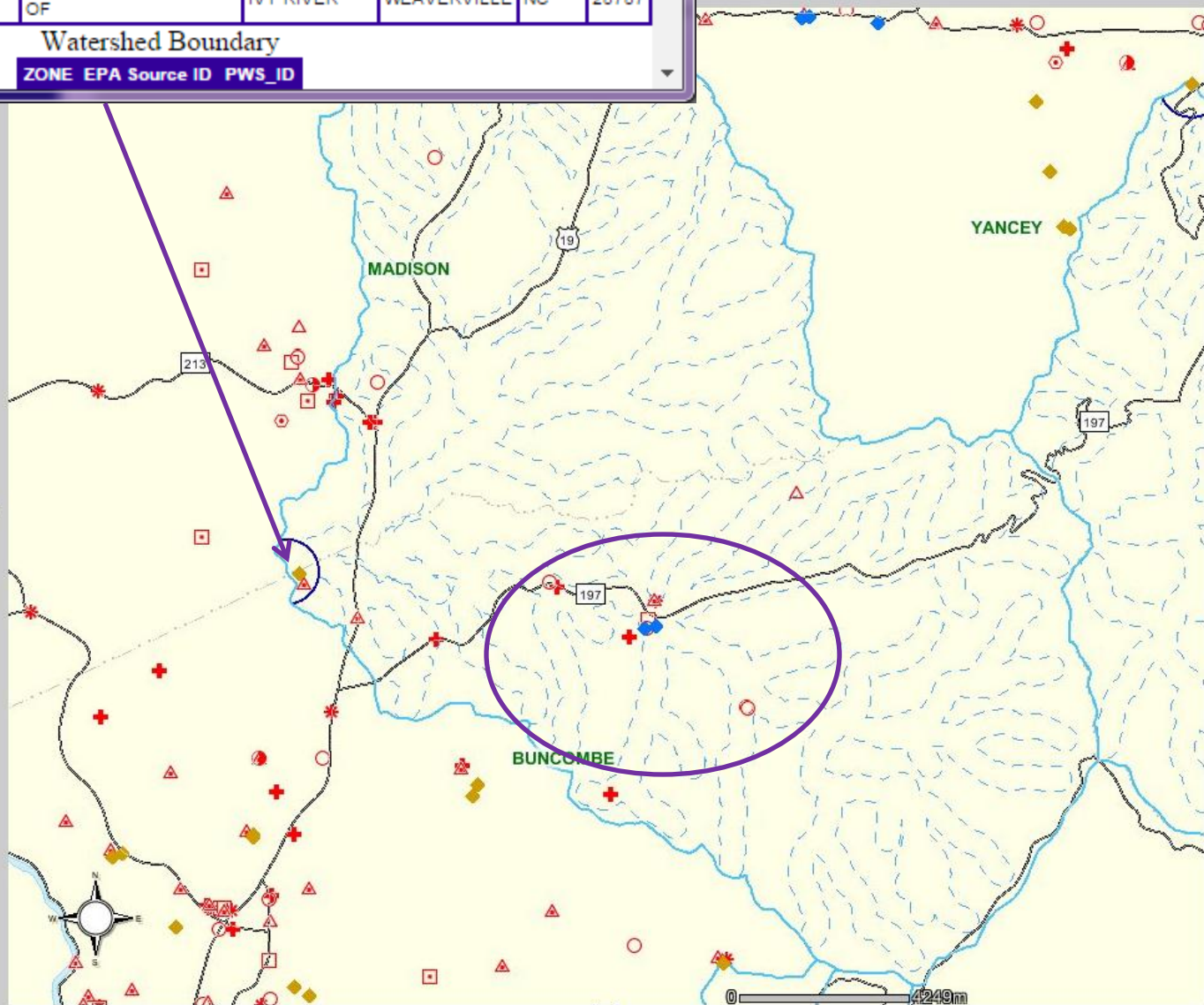
Visible Active
 Ground Water Delineated Area
 Ground Water Zone A

Show Group Hide Group
Surface Water Assessment Areas - Zones
 Visible Active
 Watershed Boundary
 Protected Area Boundary (WS-IV and V only)
 Critical Area (NA for WS-1)
 Stream Zone

Show Group Hide Group
Potential Contaminant Sources
 Visible Active

- Animal Operations
- CERCLIS Sites
- National Priority List Sites
- Non Discharge Permits
- NPDES Permits
- Old Landfill Sites
- PCB Sites
- Pollution Incidents
- RCRA Gen./Trans. Facilities
- RCRA TSD Sites
- Septage Disposal Sites
- Soil Remediation Sites
- Solid Waste Facilities
- Tier II Sites
- UIC Permits
- UST Permits

Show Group Hide Group
Landmarks
 Visible Active



swamp.ncwater.org/website/swap/viewer.htm

NC SWAPinfo

Refresh Overview Map Zoom In Zoom Out Pan Previous Extent Full Extent Identify Query Locator PWS Buffer Select Clear Selection Measure Set Units

Show Group Hide Group

Wellhead Protection Areas
Visible Active

Wellhead Protection Areas

Show Group Hide Group

Ground Water Assessment Areas
Visible Active

Ground Water Delineated Area

Ground Water Zone A

Show Group Hide Group

Surface Water Assessment Areas - Zones
Visible Active

Watershed Boundary

Protected Area Boundary (WS-IV and V only)

Critical Area (NA for WS-1)

Stream Zone

Show Group Hide Group

Potential Contaminant Sources
Visible Active

Animal Operations

CERCLIS Sites

National Priority List Sites

Non Discharge Permits

NPDES Permits

Old Landfill Sites

PCB Sites

Pollution Incidents

RCRA Gen./Trans. Facilities

RCRA TSD Sites

Septage Disposal Sites

Soil Remediation Sites

Solid Waste Facilities

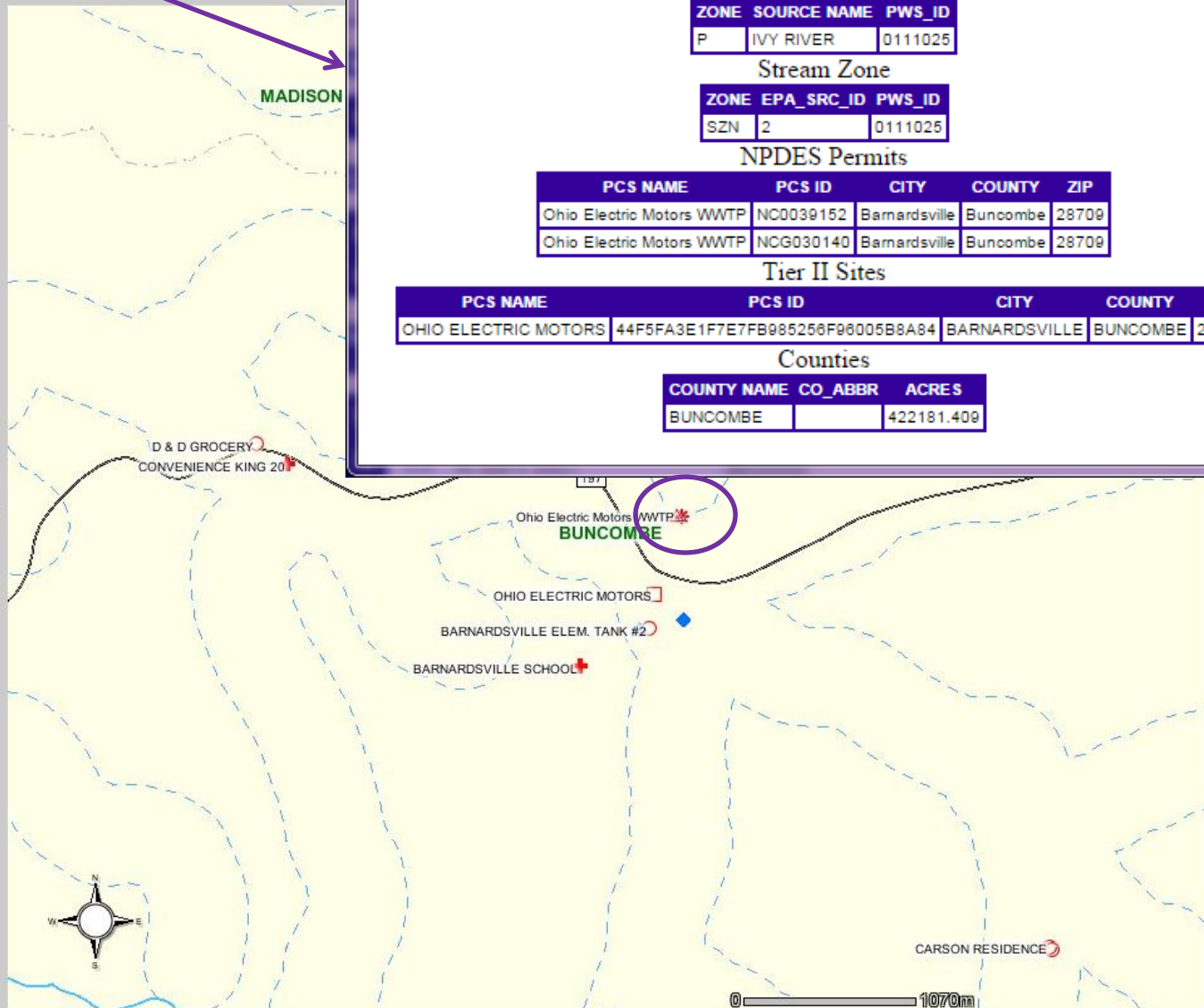
Tier II Sites

UIC Permits

UST Permits

Show Group Hide Group

Landmarks
Visible Active



Query/Selection Results - Google Chrome

about:blank

Watershed Boundary

ZONE	EPA Source ID	PWS_ID
WAA	2	0111025

Protected Area Boundary (WS-IV and V only)

ZONE	SOURCE NAME	PWS_ID
P	IVY RIVER	0111025

Stream Zone

ZONE	EPA_SRC_ID	PWS_ID
SZN	2	0111025

NPDES Permits

PCS NAME	PCS ID	CITY	COUNTY	ZIP
Ohio Electric Motors WWTP	NC0039152	Barnardville	Buncombe	28709
Ohio Electric Motors WWTP	NCG030140	Barnardville	Buncombe	28709

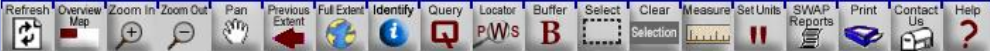
Tier II Sites

PCS NAME	PCS ID	CITY	COUNTY	ZIP
OHIO ELECTRIC MOTORS	44F5FA3E1F7E7FB985256F96005B8A84	BARNARDSVILLE	BUNCOMBE	28709

Counties

COUNTY NAME	CO_ABBR	ACRES
BUNCOMBE		422181.409

NC SWAPinfo



- Ground Water Delineated Area
 - Ground Water Zone A
- Show Group Hide Group

Surface Water Assessment Areas - Zones

- Visible Active
- Watershed Boundary
 - Protected Area Boundary (WS-IV and V only)
 - Critical Area (NA for WS-1)
 - Stream Zone
- Show Group Hide Group

Potential Contaminant Sources

- Visible Active
- Animal Operations
 - CERCLIS Sites
 - National Priority List Sites
 - Non Discharge Permits
 - NPDES Permits
 - Old Landfill Sites
 - PCB Sites
 - Pollution Incidents
 - RCRA Gen./Trans. Facilities
 - RCRA TSD Sites
 - Septage Disposal Sites
 - Soil Remediation Sites
 - Solid Waste Facilities
 - Tier II Sites
 - UIC Permits
 - UST Permits
- Show Group Hide Group

Landmarks

- Visible Active
- Major Roads
 - Municipal Boundaries
 - Hydrology
 - Counties
- Show Group Hide Group

